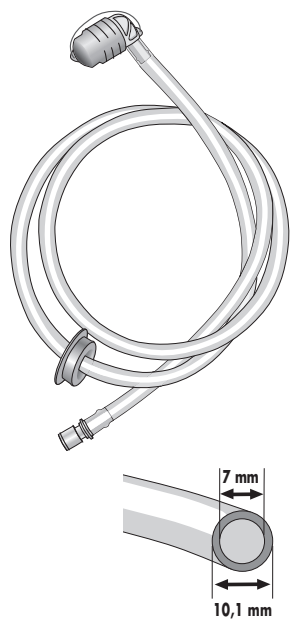


HYDRATION SYSTEM

DE MONTAGEANLEITUNG
 GB ASSEMBLY INSTRUCTIONS
 FR INSTRUCTIONS DE MONTAGE
 IT ISTRUZIONI DI MONTAGGIO

NL MONTAGE HANDLEIDING
 DK MONTERINGSVEJLEDNING
 ES INSTRUCCIONES DE MONTAJE
 SE MONTERINGS ANVISNING

NO MONTERINGS ANVISNING
 FI ASENNUSOHJEET
 PL INSTRUKCJA MONTAZU
 JP 換気の良い所に保管してください。

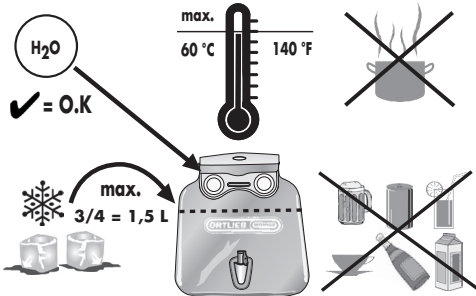


BPA free ✓ = O.K

LDA ✓ = O.K

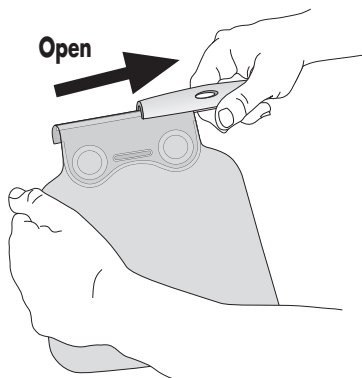


1. Notes

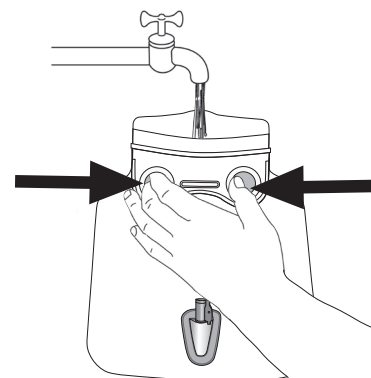


Caution: Never use boiling water. Do not scrub reservoir with abrasive materials.

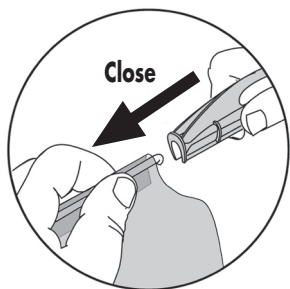
2.1 Opening reservoir



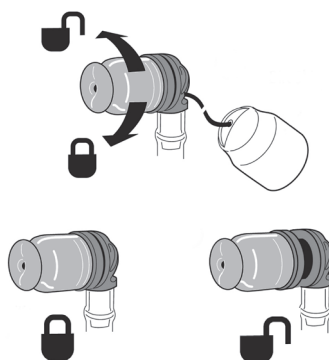
2.2 Filling reservoir



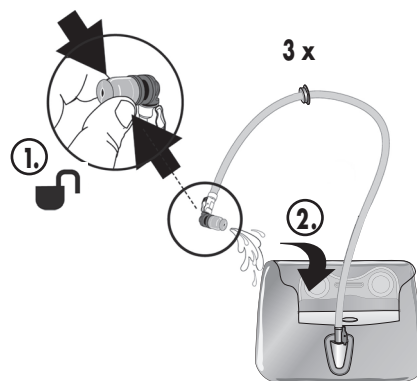
2.3 Closing reservoir



2.4 Valve use



3. Clean before first use



4. Valve use

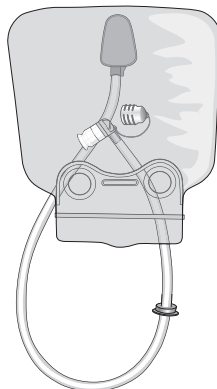
To get maximum flow bite gently on the bite zone.



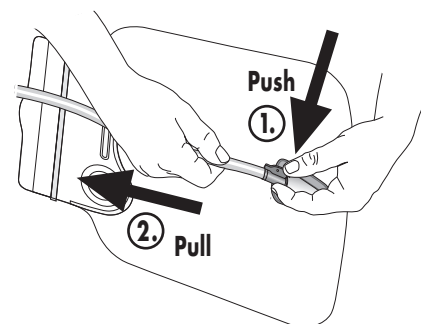
5.1 Drying reservoir

Drain reservoir completely and hang it upside down.

You may also use paper towels to dry the reservoir.

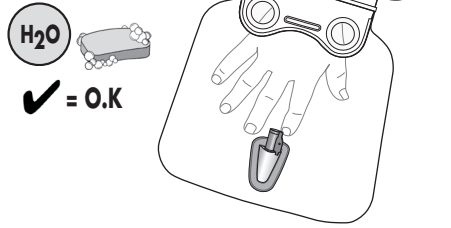


5.2 Disconnecting tube

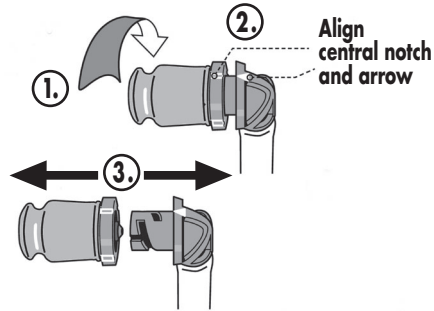


5.3 Cleaning reservoir

Wash with mild soapy water and rinse several times.

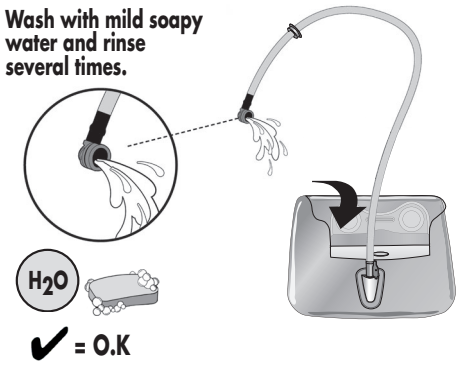


5.4 Cleaning valve

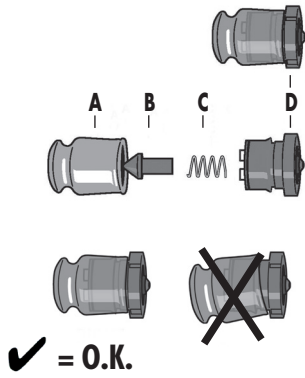


5.5 Cleaning tube

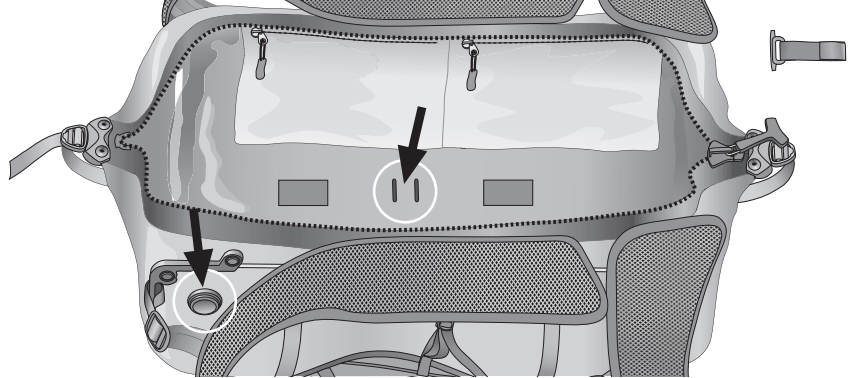
Wash with mild soapy water and rinse several times.



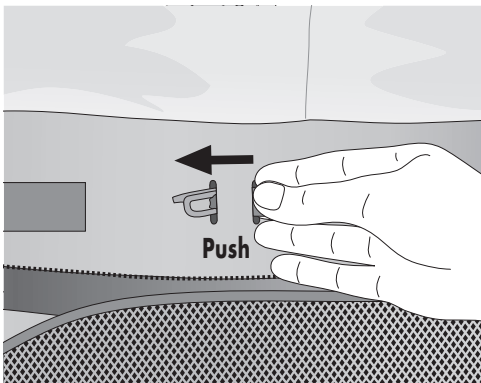
5.6 Cleaning if severely soiled



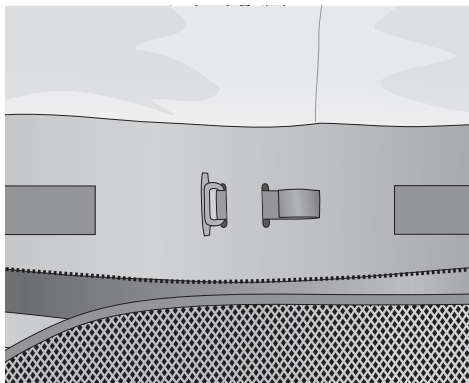
6.1 Attaching reservoir to backpack



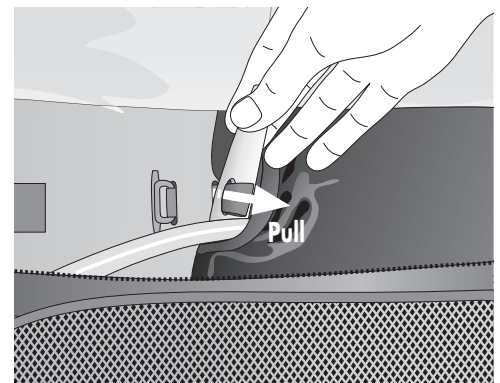
6.2 Attaching reservoir to backpack



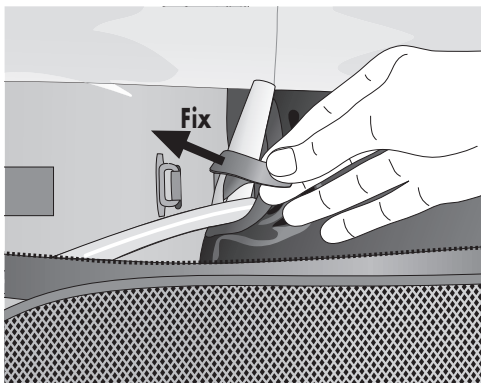
6.3 Attaching reservoir to backpack



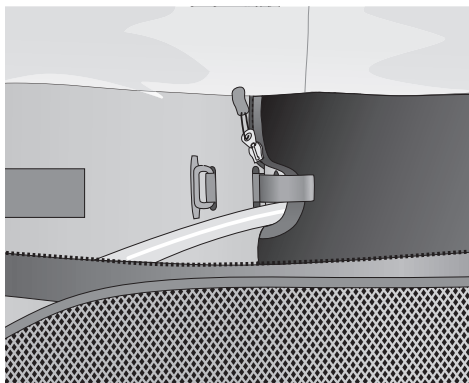
6.4 Attaching reservoir to backpack



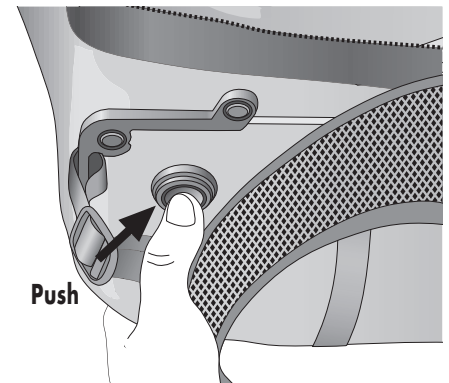
6.5 Attaching reservoir to backpack



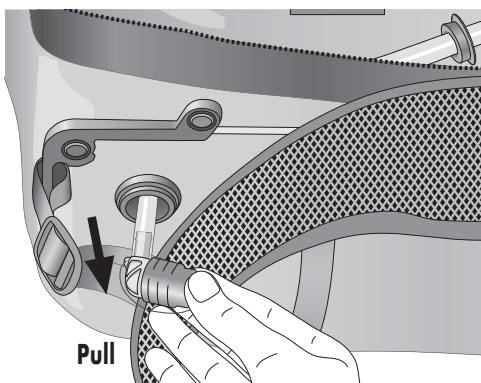
6.6 Attaching reservoir to backpack



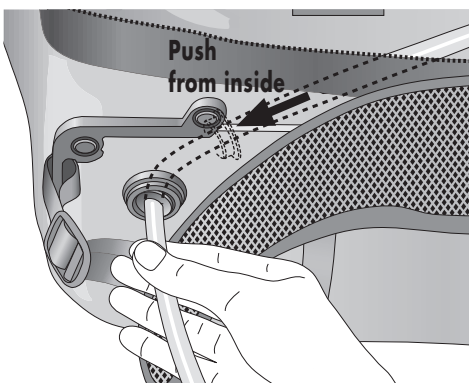
7.1 Attaching tube to backpack



7.2 Attaching tube to backpack



7.3 Attaching tube to backpack



7.4 Attaching tube to backpack

